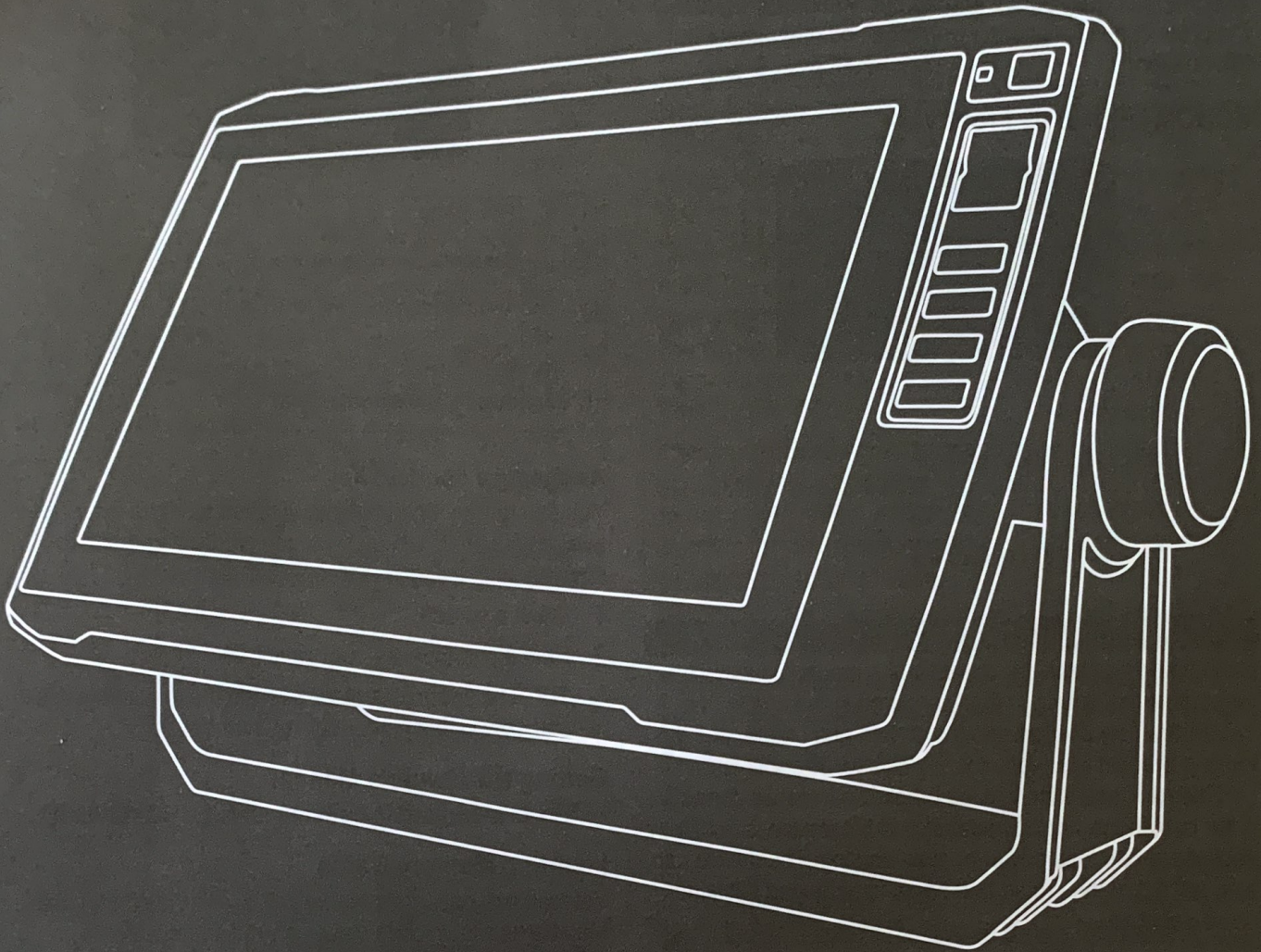


GARMIN®



ECHOMAP™ UHD

Quick Start Manual

support.garmin.com

© 2019 Garmin Ltd. or its subsidiaries

Garmin®, the Garmin logo, and ActiveCaptain® are trademarks of Garmin Ltd. or its subsidiaries, registered in the USA and other countries. ECHOMAP™, Garmin ClearVü™, Panoptix™, and Garmin Quickdraw™ are trademarks of Garmin Ltd. or its subsidiaries. These trademarks may not be used without the express permission of Garmin.

The BLUETOOTH® word mark and logos are owned by the Bluetooth SIG, Inc. and any use of such marks by Garmin is under license. NMEA®, NMEA 2000®, and the NMEA 2000 logo are registered trademarks of the National Marine Electronics Association. microSD® and the microSD logo are trademarks of SD-3C, LLC. Wi-Fi® is a registered mark of Wi-Fi Alliance Corporation.



Printed in Taiwan
November 2019
190-02598-01_0A



Introduction

⚠ WARNING

See the *Important Safety and Product Information* guide in the product box for product warnings and other important information.

ECHOMAP UHD 60 Front View



| | |
|---|----------------------------|
| ① | Power key |
| ② | Automatic backlight sensor |
| ③ | Keys |
| ④ | microSD® memory card slot |

NOTICE

Each time you place the device in the cradle, you should make sure the device is firmly secured in the cradle, the cables are fully pushed into the device and cradle, and the locking bracket is snapped firmly closed. There is an audible click when the locking bracket is installed correctly. If the cables are not fully seated and the device is not firmly secured, it can lose power or stop working. The device can also fall out of the cradle and become damaged if it is not firmly secured.

Device Keys

| | |
|--------|---|
| ⏻ | Turns on and off the device when held. |
| | Opens a shortcut menu to backlight, color mode, and sonar transmission when quickly pressed and released. |
| | Scrolls through the brightness levels when pressed repeatedly. |
| ⏪ | Zooms out of a chart or view. |
| ⏩ | Zooms in to a chart or view. |
| ⏴ | Scrolls, highlights options, and moves the cursor. |
| SELECT | Acknowledges messages and selects options. |
| BACK | Returns to the previous screen. |
| MARK | Saves the present location as a waypoint. |
| HOME | Returns to the Home screen. |
| | Takes a screenshot when held. |
| MENU | Opens a menu of options for the page, when applicable. |
| | Closes a menu, when applicable. |

ECHOMAP UHD 70/90 Front View



| | |
|---|----------------------------|
| ① | Power key |
| ② | Automatic backlight sensor |
| ③ | Touchscreen |
| ④ | Shortcut keys |
| ⑤ | microSD memory card slot |

Assigning a Shortcut Key

You can quickly open commonly used screens by assigning a shortcut key. You can create a shortcut to screens such as sonar screens and charts.

- 1 Open a screen.
- 2 Hold a shortcut key, and select **OK**.

TIP: The shortcut is also saved to the Frequently Used category with the shortcut key number.

Getting the Owner's Manual

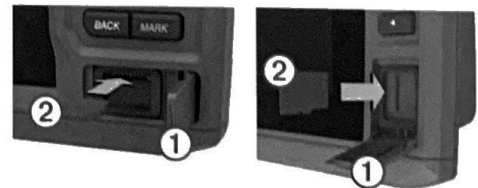
Go to www.garmin.com/manuals/ECHOMAPUHD.

Inserting Memory Cards

You can use optional memory cards with the chartplotter. Map cards allow you to view high-resolution satellite imagery and aerial reference photos of ports, harbors, marinas, and other points of interest. You can use blank memory cards to record Garmin Quickdraw™ Contours mapping, record sonar (with a compatible transducer), transfer data such as waypoints and routes to another compatible chartplotter or a computer, and use the ActiveCaptain® app.

This device supports up to a 32 GB microSD memory card, formatted to FAT32. Speed class 4 or greater required.

- 1 Open the access flap or door ① on the front of the chartplotter.



- 2 Insert the memory card ②.
- 3 Press the card in until it clicks.
- 4 Close the door.

Getting Started with the ActiveCaptain App

NOTE: The ActiveCaptain feature is only available on models that have Wi-Fi® technology.

You can connect a mobile device to the ECHOMAP UHD device using the ActiveCaptain app. The app provides a quick and easy way for you to interact with your chartplotter and complete such tasks as sharing data, registering, and updating the device software and maps.

- 1 From the ECHOMAP UHD device, select **ActiveCaptain**.
- 2 From the **ActiveCaptain** page, select **Wi-Fi Network > Wi-Fi > On**.
- 3 Enter a name and password for this network.
- 4 From the application store on your mobile device, install and open the ActiveCaptain app.
- 5 Bring the mobile device within 32 m (105 ft.) of the ECHOMAP UHD device.
- 6 From your mobile device settings, open the Wi-Fi connections page and connect to the Garmin® device, using the name and password you entered in the Garmin device.


For more information about the ActiveCaptain app and features, see the Owner's Manual at www.garmin.com/manuals/ECHOMAPUHD or watch a video at www.garmin.com/ActiveCaptainVideo.

Acquiring GPS Satellite Signals

The device may need a clear view of the sky to acquire satellite signals. The time and date are set automatically based on the GPS position.

- 1 Turn on the device.
- 2 Wait while the device locates satellites.
It may take 30 to 60 seconds to acquire satellite signals.


When the device acquires satellite signals,  appears at the top of the Home screen.

If the device loses satellite signals,  disappears and a flashing question mark appears over  on the chart.


For more information about GPS, go to www.garmin.com/aboutGPS.

Adjusting the Backlight

- 1 Select **Settings > System > Display > Backlight**.
- 2 Adjust the backlight.

TIP: From any screen, press  repeatedly to scroll through the brightness levels. This can be helpful when the brightness is so low you cannot see the screen.

Adjusting the Color Mode

- 1 Select **Settings > System > Display > Color Mode**.
TIP: Select  **Color Mode** from any screen to access the color settings.
- 2 Select an option.

Customizing the Home Screen

You can add items to and rearrange items on the Home screen.

- 1 From the Home screen, select **Customize Home**.
- 2 Select an option:
 - To rearrange an item, select **Rearrange**, select the item to move, and select the new location.
 - To add an item to the Home screen, select **Add**, and select the new item.
 - To remove an item you have added to the Home screen, select **Remove**, and select the item.

Garmin Support Center

Go to support.garmin.com for help and information, such as product manuals, frequently asked questions, videos, software updates, and customer support.

Sonar Fishfinder

When properly connected to a compatible transducer, your ECHOMAP UHD device can be used as a fishfinder.

For more information about which transducer is best for your needs, go to www.garmin.com/transducers.

Different sonar views can help you view the fish in the area. The sonar views available vary depending on the type of transducer and sounder module connected to the chartplotter. For example, you can view Garmin ClearVü™ sonar screens only if you have a compatible Garmin ClearVü transducer connected.

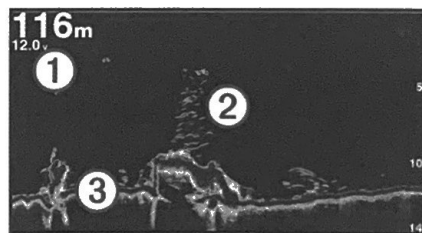
There are four basic styles of sonar views available: a full-screen view, a split-screen view that combines two or more views, a split-zoom view, and a split-frequency view that displays two different frequencies. You can customize the settings for each view in the screen. For example, if you are viewing the split-frequency view, you can separately adjust the gain for each frequency.

If you do not see an arrangement of sonar views to suit your needs, you can create a custom combination screen.

Traditional Sonar View

There are several full-screen views available, depending on the transducer that is connected.

The full-screen Traditional sonar view shows a large image of the sonar readings from a transducer. The range scale along the right side of the screen shows the depth of detected objects as the screen scrolls from the right to the left.



| | |
|---|-----------------------------|
| ① | Depth information |
| ② | Suspended targets or fish |
| ③ | Bottom of the body of water |

Selecting the Transducer Type

If you are connecting a transducer that was not included with the device, you may need to set the transducer type to make the sonar function properly. Before connecting the transducer, you should select the transducer type. The transducer name should be listed on the label on the transducer cable, near the connector.

This device is compatible with a range of accessory transducers, including Garmin ClearVü transducers, which are available at www.garmin.com/transducers.

- 1 Select **Settings > My Vessel > Transducer Type**.
- 2 Select an option:
 - If you have a 200/77 kHz, dual-beam transducer, select **Dual Beam (200/77 kHz)**.

- If you have a 200/50 kHz, dual-frequency transducer, select **Dual Frequency (200/50 kHz)**.
- If you have another type of transducer, select it from the list.

Creating a Waypoint on the Sonar Screen

- 1 From a sonar view, select **MENU > Pause Sonar**.
- 2 Select a location.
- 3 Select **New Waypoint** or **SELECT**.
- 4 If necessary, edit the waypoint information, such as the waypoint name.

Navigation

Navigation Chart and Fishing Chart

The Fishing Chart provides a detailed view with more bottom detail and fishing content. This chart is optimized for use when fishing.

The Navigation Chart is optimized for navigation. You can plan a course, view map information, and use the chart as a navigational aid.

Marking Your Present Location as a Waypoint

From any screen, select **MARK**.

Creating a Waypoint at a Different Location

- 1 Select **Nav Info > Waypoints > Create Waypoint**.
- 2 Select an option:
 - To create the waypoint by entering position coordinates, select **Enter Coordinates**, and enter the coordinates.
 - To create the waypoint using a chart, select **Use Chart**, select the location, and select **SELECT**.

Marking an MOB or SOS Location


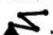

Select **MARK > Man Overboard**.

An international man overboard (MOB) symbol marks the active MOB point and the chartplotter sets a direct course back to the marked location.

Navigating to a Point on the Chart

WARNING

All route and navigation lines displayed on the chartplotter are only intended to provide general route guidance or to identify proper channels, and are not intended to be precisely followed. Always defer to the navaids and conditions on the water when navigating to avoid groundings or hazards that could result in vessel damage, personal injury, or death.

- 1 From the Navigation chart or Fishing chart, select a location.
- 2 If necessary, select **Navigate To**.
- 3 Select an option:
 - To navigate directly to the location, select **Go To** or .
 - To create a route to the location, including turns, select **Route To** or .
 - To use Auto Guidance, select **Auto Guidance** or .

NOTE: Auto Guidance is available with premium charts, in some areas.

- 4 Review the course indicated by the magenta line.

NOTE: When using Auto Guidance, a gray segment within any part of the magenta line indicates that Auto Guidance cannot calculate part of the Auto Guidance line. This is due to the settings for minimum safe water depth and minimum safe obstacle height.
- 5 Follow the magenta line, steering to avoid land, shallow water, and other obstacles.

Creating and Navigating a Route From Your Present Location

You can create and immediately navigate a route on the Navigation chart or the Fishing chart. This method does not save the route or the waypoint data.

- 1 From the Navigation chart or Fishing chart, select a destination.
- 2 Select **Navigate To > Route To**.
- 3 Select the location of the last turn before the destination.
- 4 Select **Add Turn**.
- 5 If necessary, repeat to add turns, working backward from the destination to the present location of your vessel.

The last turn you add should be the first turn you make, starting from your present location. It should be the turn closest to your vessel.
- 6 If necessary, select **MENU**.
- 7 Select **Navigate Route**.
- 8 Review the course indicated by the magenta line.
- 9 Follow the magenta line, steering to avoid land, shallow water, and other obstacles.

Stopping Navigation

From the Navigation chart or Fishing chart, select **MENU > Stop Navigation**.

Mapping a Body of Water Using the Garmin Quickdraw Contours Feature

Before you can use the Garmin Quickdraw Contours feature, you must have sonar depth, your GPS position, and a memory card with free space.

- 1 From a chart view, select **MENU > Quickdraw Contours > Start Recording**.
- 2 When recording is complete, select **MENU > Quickdraw Contours > Stop Recording**.
- 3 Select **Manage > Name**, and enter a name for the map.